



SNAPSHOT

April 2020

AN INFOGRAPHIC NEWSLETTER OF THE INSTITUTIONAL RESEARCH AND DECISION SUPPORT (IRADS) OFFICE
IN COLLABORATION WITH FIRST-GENERATION PROGRAMS

FIRST-GENERATION COLLEGE UNDERGRADUATE STUDENTS

Chapman defines a first-generation (FG) college student as a student whose parent(s)/legal guardian(s) have not completed a bachelor's degree. This includes students whose siblings may have attended college, or their parent(s)/legal guardians attended college but did not finish a 4-year degree. Chapman University's Strategic Plan for 2018 to 2022 and the Diversity and Inclusion Strategic Plan both have identified the goal of developing a diverse student body by expanding opportunities through the recruitment, retention and financial support of first-generation students. This newsletter provides a profile of Chapman University's first-generation undergraduate students.

FG ENROLLMENT: FALL 2019

Entering Undergraduate Students

FG First-Year: **259** FG Transfer: **104**

Total FG: 1,387 (96% full-time)



FG DEMOGRAPHICS: FALL 2019

Race/Ethnicity

- 34.4% White
- 33.9% Hispanic/Latino
- 14.8% Asian
- 7.6% Two or more races
- 4.3% Nonresident Alien
- 2.2% Black/African American
- 2.1% Unknown
- 0.4% American Indian/Alaska Native
- 0.3% Native Hawaiian/Other Pacific Islander

Gender

- 61.9% Female
- 38.1% Male

SES-Pell

- 40.3% Pell Eligible
- 28.0% Stafford, not Pell
- 31.7% Neither



FG COLLEGE OR SCHOOL: FALL 2019

- 27% Argyros School of Business & Economics
- 4% Attallah College of Educational Studies
- 5% College of Performing Arts
- 15% Crean College of Health & Behavioral Sciences
- 11% Dodge College of Film & Media Arts
- 4% Fowler School of Engineering
- 9% Schmid College of Science and Technology
- 11% School of Communication
- 0.9% School of Pharmacy
- 15% Wilkinson College of Arts, Humanities & Social Sciences
- 4% Undeclared



TOP 3 POPULAR MAJORS

- 24.0% Business Administration
- 7.4% Psychology
- 6.3% Health Sciences

FG FALL-TO-FALL RETENTION RATES

Fall 2018 Entering Cohort

Full-time First Time Baccalaureate Cohort: **91%** Full-time First Time Transfer Cohort: **88%**

FG SIX-YEAR GRADUATION RATE

Fall 2013 Entering Cohort

Full-time First Time Baccalaureate Cohort: **80%**

CIRP FRESHMAN SURVEY FG RESULTS

Each year thousands of students across the United States complete the CIRP Freshman Survey. The results in this newsletter profile Chapman University's 2019 first-time, full-time entering undergraduate students. Over 1,550 incoming first-year students completed the survey during orientation resulting in an 88% response rate. Of the total respondents, 88 were identified as first-generation college students.

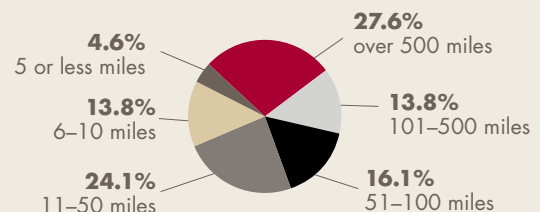
WHY GO TO COLLEGE AT ALL?

Percent reporting "Very Important"



- 85.0% To learn more about things that interest me
- 80.0% To be able to get a better job
- 75.0% To get training for a specific career
- 73.7% To gain a general education and appreciation of ideas
- 73.4% To be able to make more money
- 60.0% To make me a more cultured person
- 56.2% To prepare myself for graduate or professional school
- 33.7% To please my family

HOW MANY MILES IS CHAPMAN UNIVERSITY FROM HOME?



2019 NATIONAL SURVEY OF STUDENT ENGAGEMENT (NSSE) FG RESULTS

The NSSE is widely used to assess student engagement in educational practices associated with high levels of learning and development. In the spring of 2019, all first-year (FY) and senior (SR) students were invited to complete the NSSE. A total of 701 students completed the online survey resulting in a response rate of 27%. Of the total respondents, 121 were identified as first-generation college students.

CONNECTING LEARNING

How often have you...
Percent reporting "Very often" or "Often"



Connected your learning to societal problems or issues

FGFY: 47%

FGSR: 77%

Included diverse perspectives (political, religious, racial/ethnic, gender, etc.) in course discussions or assignments

FGFY: 46%

FGSR: 68%

CAMPUS RELATIONSHIPS

Indicate the quality of interaction with students, faculty and student services staff at Chapman University.

Mean score from 1 "Poor" to 7 "Excellent"

Students

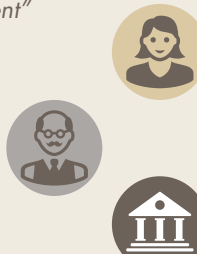
FGFY: 5.09 **FGSR: 5.45**

Faculty

FGFY: 5.43 **FGSR: 5.89**

Student Services

FGFY: 4.96 **FGSR: 4.92**



FGSR HIGH IMPACT PRACTICE

Percent reporting "Done or In Progress"



- 88%** Complete a culminating senior experience (capstone course/senior project)
- 59%** Participate in an internship, co-op, field experience, student teaching
- 36%** Participate in a study abroad program
- 23%** Work in a research project with a faculty member
- 46%** Hold formal leadership role in a student organization or group

INSTITUTIONAL FIT

Percent reporting "Agree" or "Strongly Agree"

I feel comfortable being myself at Chapman

FGFY: 91% **FGSR: 83%**

I feel valued at Chapman University

FGFY: 83% **FGSR: 81%**

I feel like part of the community at Chapman

FGFY: 81% **FGSR: 74%**



TIME SPENT WORKING AND COMMUTING

About how many hours do you spend in a typical 7-day week doing the following...

Percent reporting 16 or more hours a week

	FGFY	FGSR
Working for pay on campus	1.3%	14.0%
Working for pay off campus	10.5%	31.7%
Commuting to campus	1.3%	9.1%

OVERALL SATISFACTION

Overall Chapman Experience.

Percent reporting "Excellent" or "Good"

FGFY: 88.1% **FGSR: 86.4%**

Would you attend Chapman again?

Percent reporting "Definitely" or "Probably"

FGFY: 92.3% **FGSR: 79.5%**



EXPERIENCES WITH FACULTY

Percent reporting "Very often" or "Often"

Talked about career plans with a faculty member

FGFY: 31% **FGSR: 55%**

Discussed course topics, ideas or concepts with a faculty member outside of class

FGFY: 22% **FGSR: 48%**

Worked with a faculty member on activities other than coursework (committees, student groups, etc.)

FGFY: 11% **FGSR: 36%**



First-Generation College Student Programs @ CHAPMAN UNIVERSITY

- FG Promising Futures
- Summer Bridge
- FG Homecoming Social
- FG Graduation Ceremony
- Promising Futures Academic Enrichment Funding
- WeCU! Mentoring Program
- First Year Foundations Scholars Mentoring Program
- FG Youth Mentoring Program
- FG Ambassadors Peer Mentoring

For more information about first-generation college student programs at Chapman University, please email us at firstgen@chapman.edu