



# SNAPSHOT

November 2022

AN INFOGRAPHIC NEWSLETTER OF THE INSTITUTIONAL RESEARCH AND DECISION SUPPORT (IRADS) OFFICE

## 2022 NATIONAL SURVEY OF STUDENT ENGAGEMENT (NSSE)

The National Survey of Student Engagement is widely used to assess student engagement in educational practices associated with high levels of learning and development. Engagement indicators, examining key dimensions of student engagement, are organized into four broad themes: Academic Challenge, Learning with Peers, Experiences with Faculty, and Campus Environment. Chapman administers the NSSE every two years. In the spring of 2022, 2,954 first-year (FY) and senior (SR) students were invited to complete the NSSE. A total of 568 students completed the online survey resulting in an overall response rate of 19 percent. Please note that some of the responses are based on student experiences or reflection during remote learning due to the COVID-19 pandemic.

### ACADEMIC CHALLENGE

Percent reporting "Very much" or "Quite a bit" on a 4-point scale

Percent reporting "Very often" or "Often" on a 4-point scale



**FY: 65%**  
**SR: 70%**

Coursework emphasized applying facts, theories, or methods to practical problems or new situations



**FY: 51%**  
**SR: 72%**

Combined ideas from different courses when completing assignments



**FY: 47%**  
**SR: 47%**

Reached conclusions based on your own analysis of numerical information (numbers, graphs, statistics, etc.)

### EXPERIENCES WITH FACULTY

Percent reporting "Very often" or "Often" on a 4-point scale

**FY 23%** **SR 42%**

Talked about career plans with a faculty member

**20%** **34%**

Discussed course topics, ideas, or concepts with a faculty member outside of class

Percent reporting "Very much" or "Quite a bit" on a 4-point scale

**FY 58%** **SR 61%**

Instructors provided prompt and detailed feedback on tests or completed assignments

### CAMPUS ENVIRONMENT

Percent reporting "Very much" or "Quite a bit" on a 4-point scale

**FY 67%** **SR 67%**

Provided support to help students succeed academically

**73%** **70%**

Provided opportunities to be involved socially

**58%** **54%**

Provided support for your overall well-being (recreation, health care, counseling, etc.)

### DIVERSITY AND INCLUSION

#### IN THE CLASSROOM



How much has your coursework emphasized...

Percent reporting "Very much" or "Quite a bit" on a 4-point scale

**FY 67%** **SR 67%**

Respecting the expression of diverse ideas

**59%** **54%**

Recognizing your own cultural norms and biases

**50%** **50%**

Discussing issues of equity or privilege

**47%** **49%**

Exploring your own background through projects/ assignments

#### CONVERSATIONS WITH DIVERSE OTHERS

How often have you had discussions with...

Percent reporting "Very often" or "Often" on a 4-point scale

**FY 76%** **SR 71%**

People of a race/ethnicity other than your own

**73%** **64%**

People from an economic background other than your own

**74%** **66%**

People with religious beliefs other than your own

**54%** **52%**

People with political views other than your own

### LEARNING WITH PEERS

Percent reporting "Very often" or "Often" on a 4-point scale



**FY: 59%**  
**SR: 67%**

Worked with other students on course projects or assignments



**FY: 44%**  
**SR: 33%**

Prepared for exams by discussing or working through course material with other students



**FY: 50%**  
**SR: 54%**

Explained course material to one or more students

## CLASSROOM PREPARATION

About how many hours do you spend in a typical 7-day week preparing for class (studying, reading, writing, doing homework or lab work, analyzing data, rehearsing, and other academic activities)?

Percent reporting 11 or more hours.



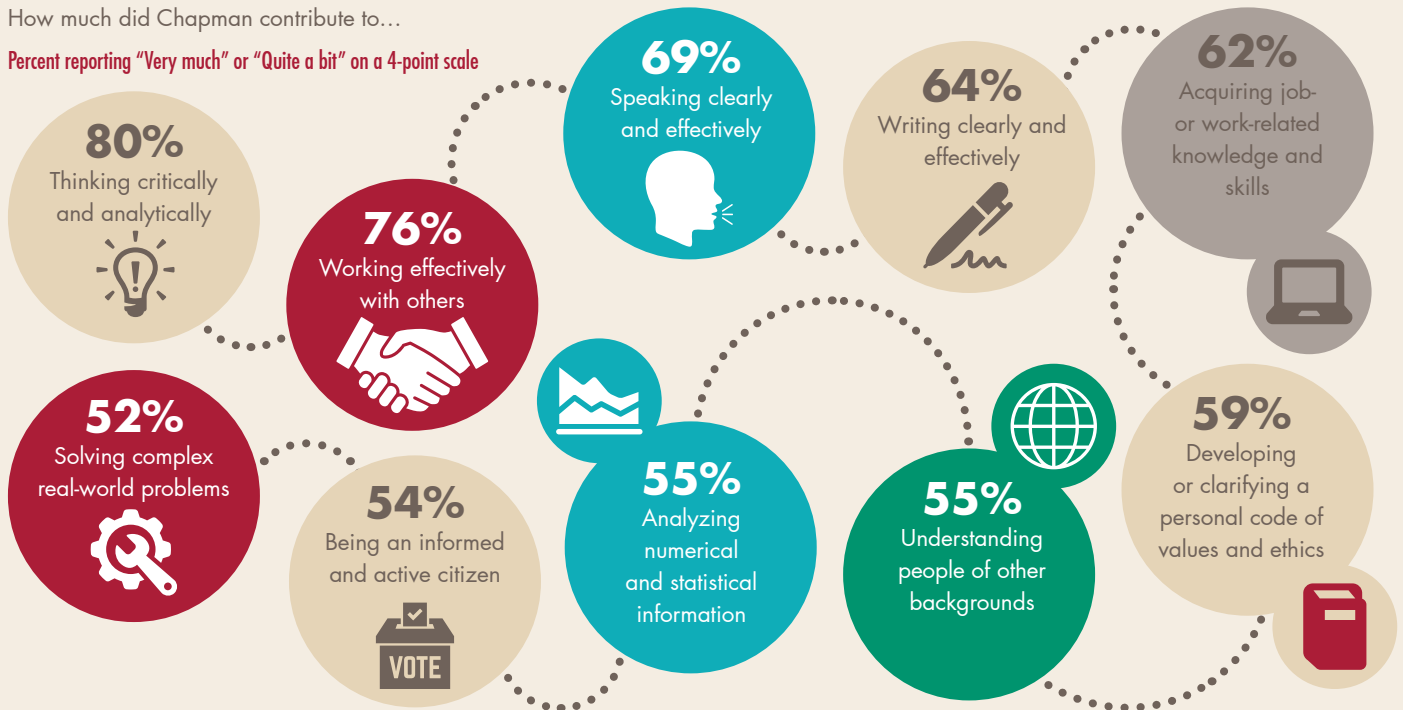
Of the time spent preparing for class in a typical 7-day week, about how much is on assigned reading?

	FR	SR
Very little	9%	14%
Some	32%	33%
About half	28%	19%
Most	24%	27%
Almost all	7%	6%

## PERCEIVED GAINS: SENIORS (SR)

How much did Chapman contribute to...

Percent reporting "Very much" or "Quite a bit" on a 4-point scale



## INSTITUTIONAL FIT

Percent reporting "Strongly Agree" or "Agree" on a 4-point scale



**FY: 85%**  
**SR: 81%**

I feel comfortable being myself at Chapman



**FY: 81%**  
**SR: 66%**

I feel valued at Chapman University



**FY: 76%**  
**SR: 67%**

I feel like part of the community at Chapman

## OVERALL SATISFACTION

Overall Chapman Experience

Percent reporting "Excellent" or "Good" on a 4-point scale



**FY: 82%**  
**SR: 81%**

Would you attend Chapman again?

Percent reporting "Definitely Yes" or "Probably Yes" on a 4-point scale



**FY: 83%**  
**SR: 74%**